

# Sheltowee Trace National Recreation Trail

As a visitor to the Sheltowee Trace National Recreation Trail, feel free to explore and discover the natural attractions along the trail. Because of the mixed land ownership when the trail was established, the trail travels along roads as well as in the woods. It touches significant historic trails like the Wilderness Road and Warrior's Path, often following them for a short distance. NOTE: This map is intended to provide general recreation locations and is not an official transportation or trail map. For more detailed road maps, topographical maps, or recreation opportunity guides, please contact one of the addresses on the back of this map.

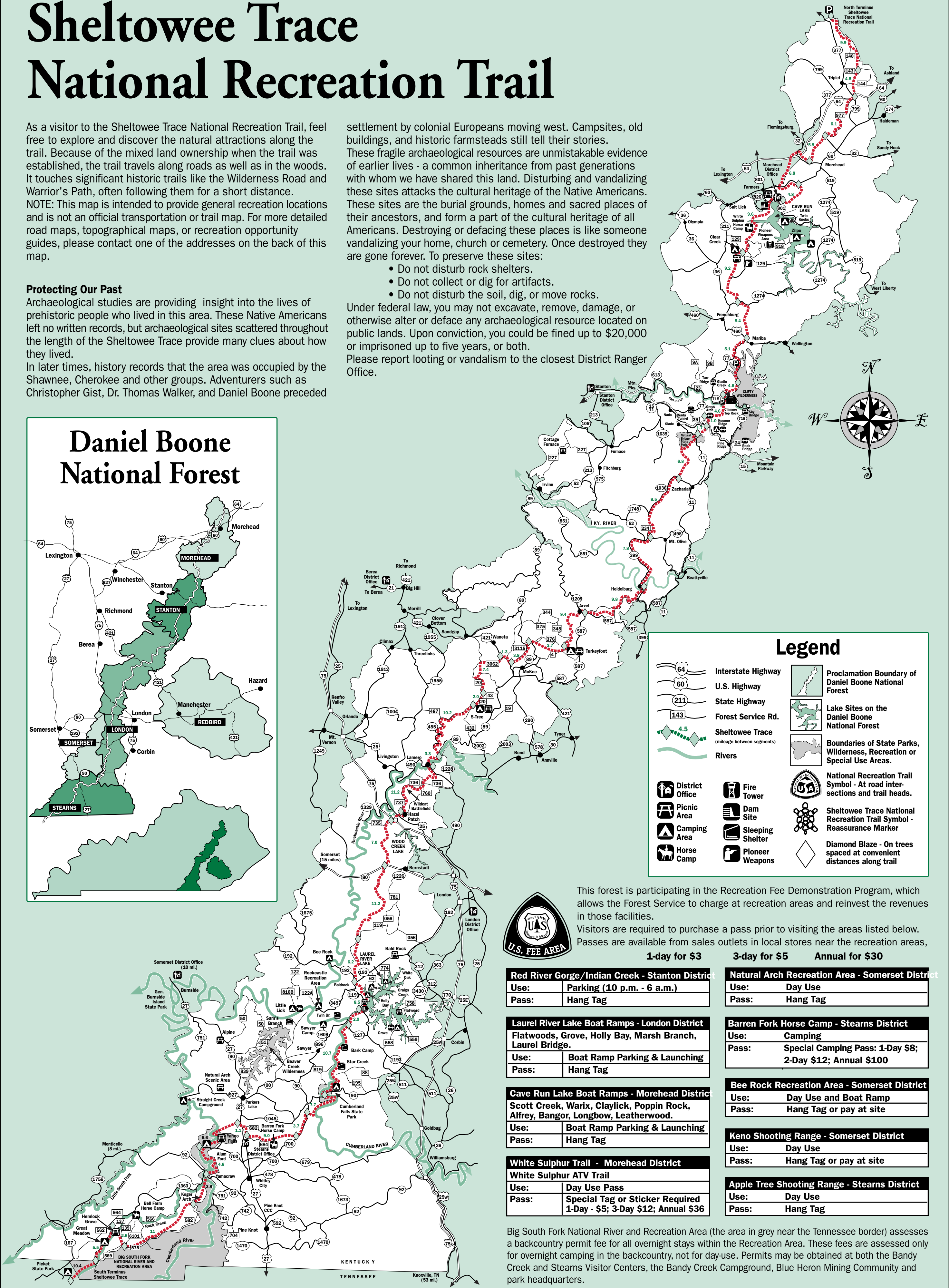
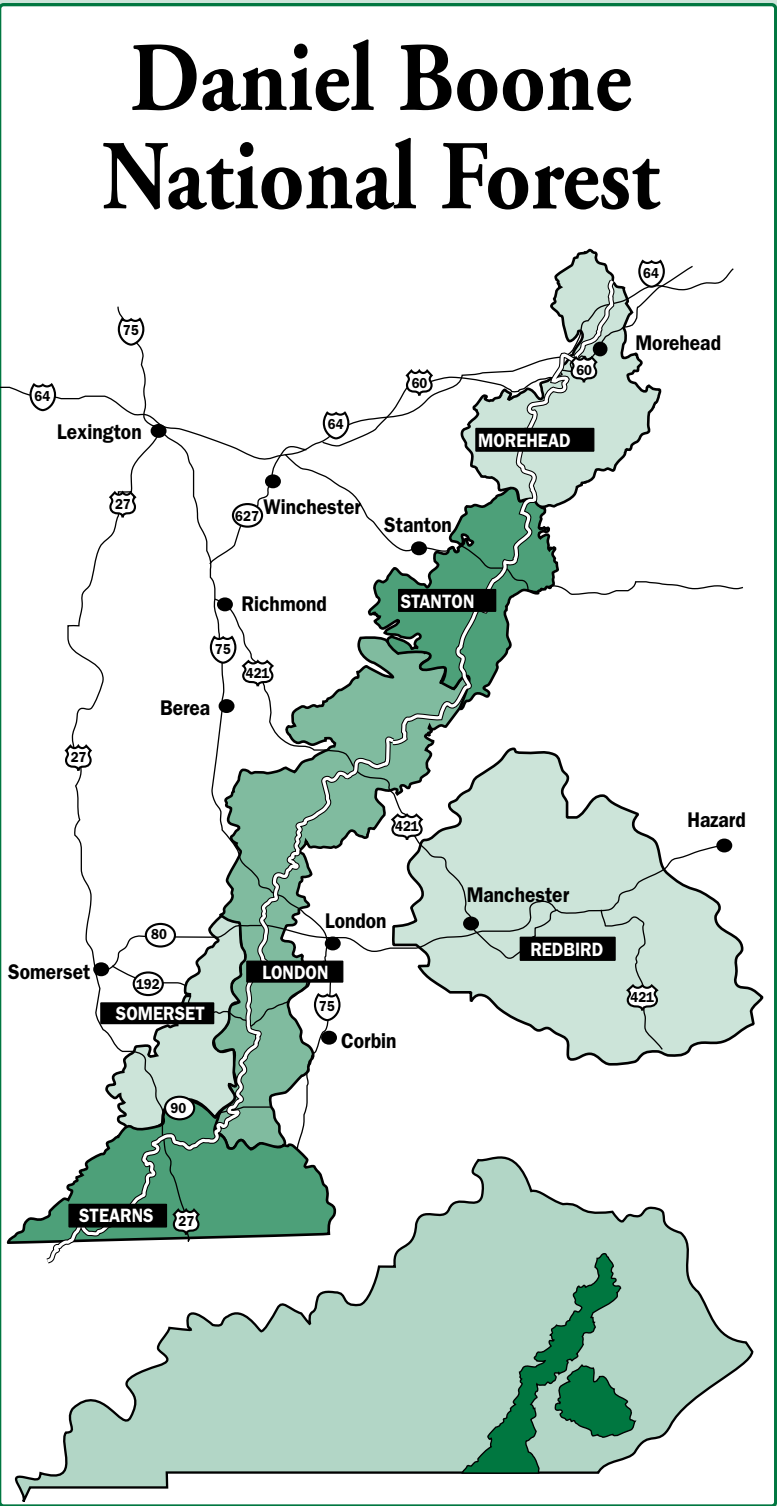
### Protecting Our Past

Archaeological studies are providing insight into the lives of prehistoric people who lived in this area. These Native Americans left no written records, but archaeological sites scattered throughout the length of the Sheltowee Trace provide many clues about how they lived. In later times, history records that the area was occupied by the Shawnee, Cherokee and other groups. Adventurers such as Christopher Gist, Dr. Thomas Walker, and Daniel Boone preceded

settlement by colonial Europeans moving west. Campsites, old buildings, and historic farmsteads still tell their stories. These fragile archaeological resources are unmistakable evidence of earlier lives - a common inheritance from past generations with whom we have shared this land. Disturbing and vandalizing these sites attacks the cultural heritage of the Native Americans. These sites are the burial grounds, homes and sacred places of their ancestors, and form a part of the cultural heritage of all Americans. Destroying or defacing these places is like someone vandalizing your home, church or cemetery. Once destroyed they are gone forever. To preserve these sites:

- Do not disturb rock shelters.
- Do not collect or dig for artifacts.
- Do not disturb the soil, dig, or move rocks.

Under federal law, you may not excavate, remove, damage, or otherwise alter or deface any archaeological resource located on public lands. Upon conviction, you could be fined up to \$20,000 or imprisoned up to five years, or both. Please report looting or vandalism to the closest District Ranger Office.



### Legend

	Interstate Highway		Proclamation Boundary of Daniel Boone National Forest
	U.S. Highway		Lake Sites on the Daniel Boone National Forest
	State Highway		Boundaries of State Parks, Wilderness, Recreation or Special Use Areas.
	Forest Service Rd.		National Recreation Trail Symbol - At road intersections and trail heads.
	Sheltowee Trace (mileage between segments)		Sheltowee Trace National Recreation Trail Symbol - Reassurance Marker
	Rivers		Diamond Blaze - On trees spaced at convenient distances along trail
	District Office		Fire Tower
	Picnic Area		Dam Site
	Camping Area		Sleeping Shelter
	Horse Camp		Pioneer Weapons



This forest is participating in the Recreation Fee Demonstration Program, which allows the Forest Service to charge at recreation areas and reinvest the revenues in those facilities.

Visitors are required to purchase a pass prior to visiting the areas listed below. Passes are available from sales outlets in local stores near the recreation areas,

1-day for \$3		3-day for \$5	Annual for \$30
<b>Red River Gorge/Indian Creek - Stanton District</b>		<b>Natural Arch Recreation Area - Somerset District</b>	
Use:	Parking (10 p.m. - 6 a.m.)	Use:	Day Use
Pass:	Hang Tag	Pass:	Hang Tag
<b>Laurel River Lake Boat Ramps - London District</b>		<b>Barren Fork Horse Camp - Stearns District</b>	
Flatwoods, Grove, Holly Bay, Marsh Branch, Laurel Bridge.		Use:	Camping
Use:	Boat Ramp Parking & Launching	Pass:	Special Camping Pass: 1-Day \$8; 2-Day \$12; Annual \$100
Pass:	Hang Tag	<b>Bee Rock Recreation Area - Somerset District</b>	
<b>Cave Run Lake Boat Ramps - Morehead District</b>		Use:	Day Use and Boat Ramp
Scott Creek, Warix, Claylick, Poppin Rock, Alfrey, Bangor, Longbow, Leatherwood.		Pass:	Hang Tag or pay at site
Use:	Boat Ramp Parking & Launching	<b>Keno Shooting Range - Somerset District</b>	
Pass:	Hang Tag	Use:	Day Use
<b>White Sulphur Trail - Morehead District</b>		Pass:	Hang Tag or pay at site
White Sulphur ATV Trail		<b>Apple Tree Shooting Range - Stearns District</b>	
Use:	Day Use Pass	Use:	Day Use
Pass:	Special Tag or Sticker Required 1-Day - \$5; 3-Day \$12; Annual \$36	Pass:	Hang Tag

Big South Fork National River and Recreation Area (the area in grey near the Tennessee border) assesses a backcountry permit fee for all overnight stays within the Recreation Area. These fees are assessed only for overnight camping in the backcountry, not for day-use. Permits may be obtained at both the Bandy Creek and Stearns Visitor Centers, the Bandy Creek Campground, Blue Heron Mining Community and park headquarters.